

## **Downloading and Updating POIs to Your SatNav (the easy way)**

### **Background**

This 'how-to' guide was prepared to help newcomers to the Satellite Navigation (SatNav) world and to assist them in downloading and updating POIs (Points of Interest) to their SatNav devices.

Points of Interests are categories which you can navigate to. For instance if you decided to 'Navigate to' the Tesco POI, your device would show you all the Tesco Stores in ascending distances from your current satellite navigation location.

I use a TomTom GO device but the general principles will be the same for most other devices. Most if not all SatNav devices will come with a built-in limited selection of standard POIs.

The total number of usable POI categories may vary from device to device. The Tesco POI quoted above is just one POI (even though it contains lots of actual stores). The latest version of the TomTom software allows for a maximum of 100 POI categories.

### **Obtaining new POIs**

There is a wealth of web sites available who operate free downloads of various POIs. Most POIs can be freely downloaded but you may have to register on the web site first (usually for free). It's usually just an email address and a password.

Other POIs such as Speed Camera positions are available for download by paying a small annual subscription and instructions for their installation are included on the web site where you download them.

One of the most widely used downloadable Speed Camera database web sites can be found at <http://www.pocketgpsworld.com/subscription.php>

In this guide we will only be looking at downloading and updating the free POIs. Some of the better web sites around are:-

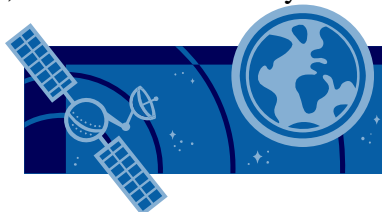
<http://www.poidownload.co.uk/>

<http://www.poihandler.com/default.aspx>

<http://www.pocketgpsworld.com/modules.php?name=POIs>

Like a lot of things we do on the internet which are new to us it can take a long time to find the information we want. If it's another few weeks before you want to repeat the process we've usually forgotten where we found it or how we refreshed it. The result is that the original information gets out of date and ceases to be of benefit to us.

If this all sounds familiar to you, then it could be that you need this guide, so read on.



## **General Principles**

We *'could'* search the internet for POI download web sites, select the items to download, go to the next web site and repeat the process, attach our SatNav device to our PC then copy the downloaded POIs from our PC to our SatNav device.

When we wanted to update our POIs we would need to go back to the same web sites previously visited, re-select them all over again and download them etc, etc.

It's a bit of a fag and quite time consuming. It also pre-supposes that we have a fairly good working knowledge of your PC.

Wouldn't it be great if we could set up more of an automated process so that 2 or 3 clicks of the mouse would update the POIs actually sat on our device? Well now we can.

We just need to install a piece of software on our PC and register on a couple of web sites. We then launch the software, select the POI web site and select the POIs to download.

When we then want to update our POIs we just start the software and click Auto-Update Now (or F9) and it will do it all for us.

The software in question is called PoiEdit and is written by dnote software.

## **Downloading the PoiEdit Software**

PoiEdit and can be downloaded from their web site <http://www.poiedit.com/index.htm>

Click on the Download link on the menu then click on the "Visit my Sponsor" link to activate the download. Close the sponsor page then click on the 'Download PoiEdit' button.

Click on 'Save' to save the software to your PC. Once downloaded, close all running programs and install the software.

## **Installing the PoiEdit Software**

When installing the software accept the default locations.

When you are prompted on install to select the '**extension types**' just select '**Navigator Binaries (\*.ov2)**', and then click NEXT.

*Note: The .ov2 format is native to TomTom and some other devices. Don't worry if your device does not use the .ov2 file format as you can convert into Garmin .csv, Navman .csv and various other formats from within PoiEdit.*

When you get to the next screen that says '**AutoUpdate upon device connect**' uncheck the '**AutoUpdate**' box.

The reason for this is that some POI's are updated on a less frequent basis so if you do check this box you may keep receiving a dialog box saying that there no updates available every time you attach your device.

## Running PoiEdit

Start the software.

*Note: Whenever you start the software it will look on their web site to see if there is a newer version available. If there is, you can download it and re-install it over the top of your current version.*

Now click Open AutoUpdate Manager or press F8



This will then take you into the main POI download screen

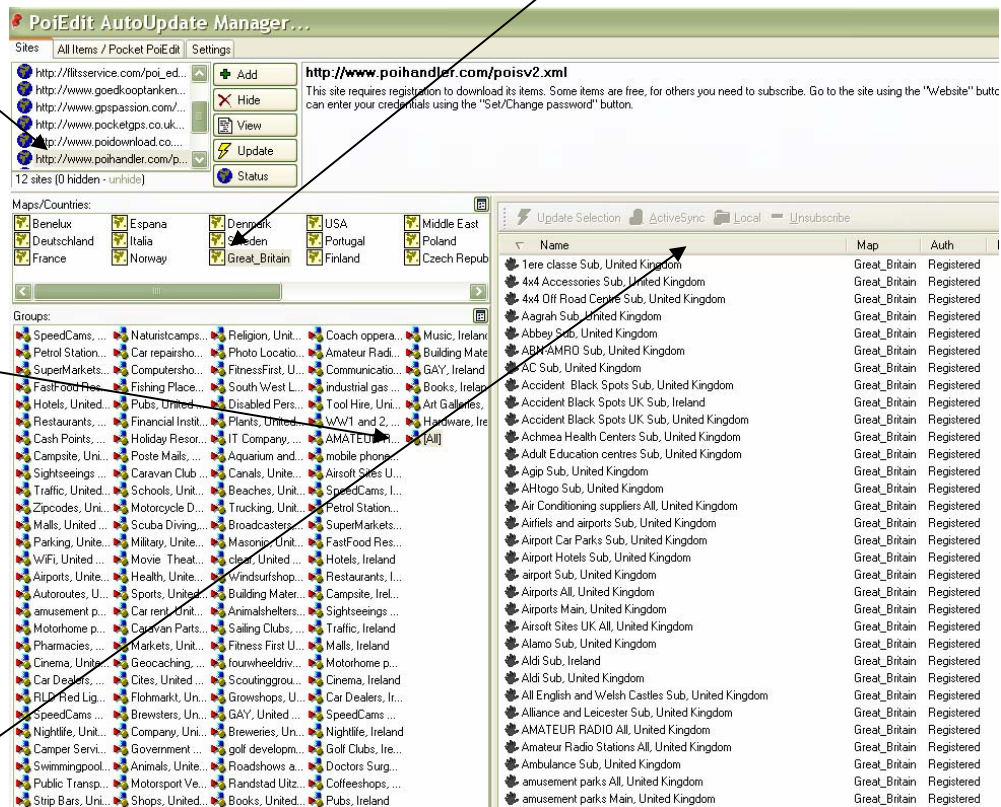
## Selecting POIs to Download

The screen looks a bit complicated but it's really quite straight forward once you get your head around it.

Select the web site you are interested in then select the country you want the POIs for

The categories appear here but it may be better to select ALL

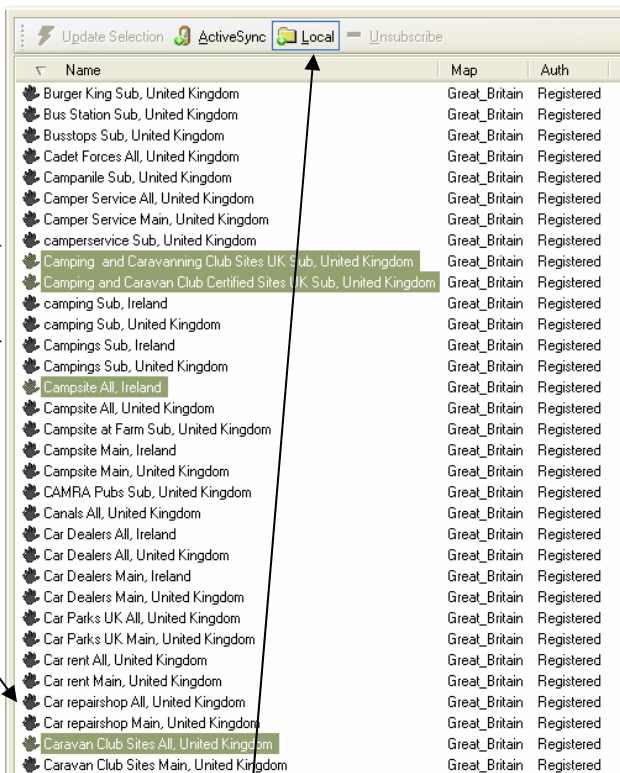
You can now arrange them in alphabetical order by clicking on the column heading



Once in alphabetical order (and the column width has been dragged wider) it will be easier to see each POI category description.

You can either pick one category at a time or by clicking on to each required category whilst holding down the CTRL key.

In reality it may pay to select a few then repeating this process until you reach the end of the list



### Selecting a Download Folder

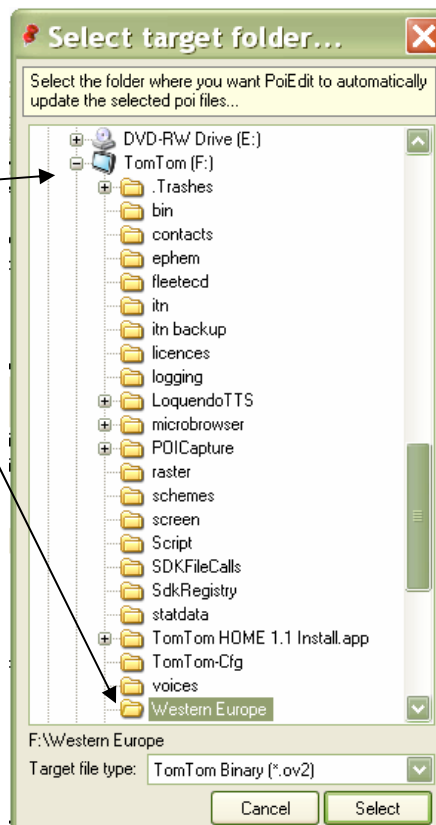
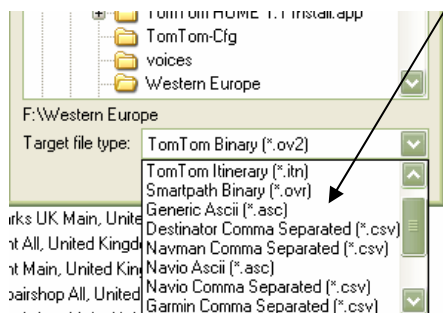
Once you have selected your POI category click on to the **Local** button to select a download location folder to store the POIs in.

The target folder could either be on your PC or better still in the map folder of your SatNav device.

In this example I have attached my TomTom GO and it has been registered as the F:\ drive.

I then need to open up the folders and select the map folder which in my case is called Western Europe. Yours may be called something else depending on what device you have and what map is installed.

Make sure it says TomTom Binary (\*.ov2) or whatever device format you wish.



Once you have downloaded all the POIs you want for that country you may want to repeat the process for another country if you are going abroad. Maybe some supermarkets, museums, beaches, parking places or hotels etc, etc.

Once you have finished with that web site (top left of the screen) you may want to see what other web sites have to offer? Repeat the process above.

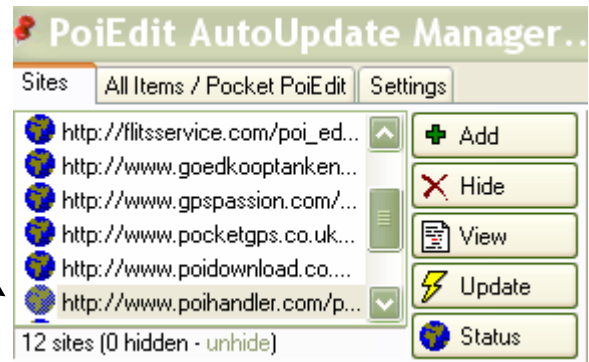
In particular, I would advise you to look closely at the [www.poihandler.com](http://www.poihandler.com) and [www.pocketgps.co.uk](http://www.pocketgps.co.uk) web sites where you should find most of what you're ever likely to need.

### **POI Web Site Registration**

Don't forget that some web sites need you to register before you can download POIs (that is certainly the case with [www.poihandler.com](http://www.poihandler.com)).

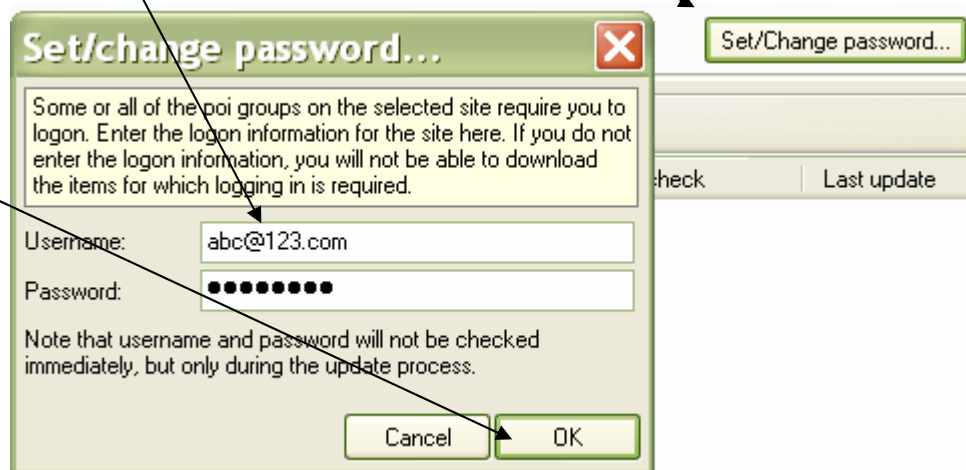
Once you have your registration accepted you can enter your Username and Password in PoiEdit.

Select the appropriate web site (top left of screen)



Then click on Set/Change Password (on the right of the screen)

Now type in the Username and Password you used to register yourself on the web site.

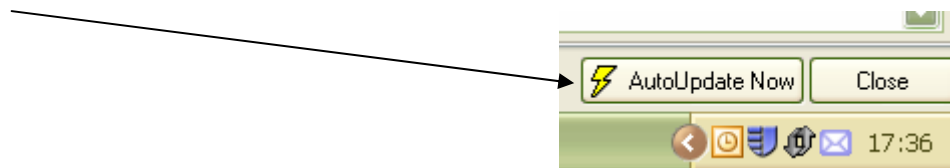


Click OK to save

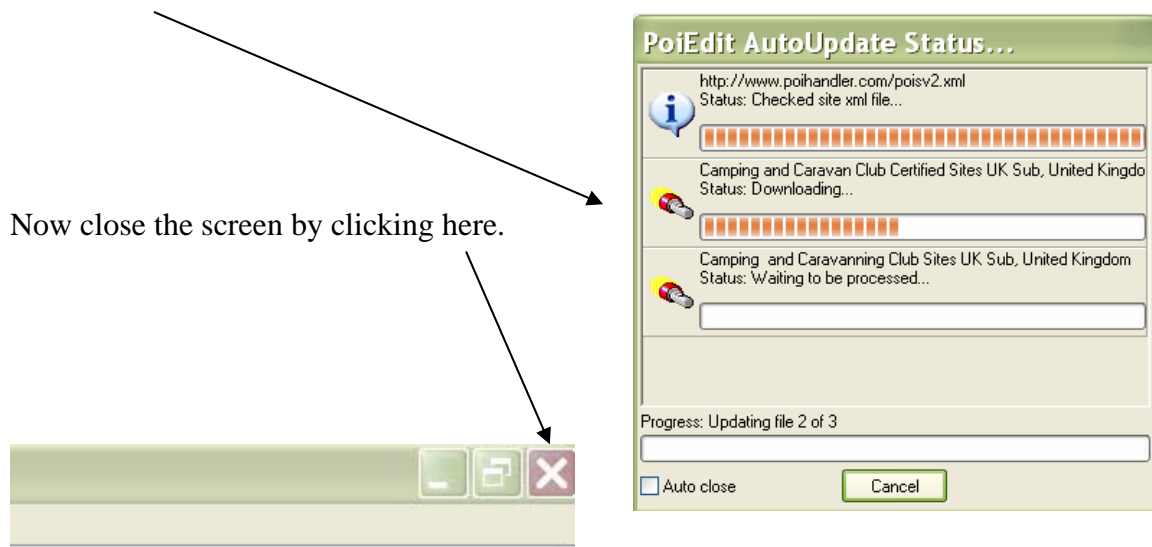
## Downloading the POIs

O.K., we've made all our selections, now we want to download them.

Click on to the AutoUpdate Now button (at the bottom right of your screen).



The POIs will now be downloaded to the folder you selected earlier.



Now close the screen by clicking here.



... and that's all there is to it. Shut done PoiEdit and you're all done.

## Conclusion

It may seem like a very time consuming process but just remember that you only need to set it up once. Now that you have finished, whenever you want to update your POIs all you have to do is to start PoiEdit and auto-update your selections.

## Updating Your POIs

Connect your SatNav to your PC and turn it on.

Start PoiEdit and select **AutoUpdate Now** or press F9

Should you want to alter your previous selections select **Open AutoUpdate Manager** or press F8 to add or subtract more POIs.

